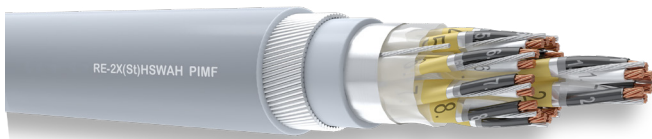


## XLPE INSULATED, LSZH SHEATHED INDIVIDUAL and OVERALL SCREENED STEEL WIRE ARMoured PIMF INSTRUMENTATION CABLE



### TECHNICAL DATA

- Max. Operating Temperature: 90°C
- Rated Voltage: 300/500V
- Min. Bending Radius: 10x Cable Outer Diameter
- Production Standard: EN 50288-7

### CONSTRUCTION

**Conductor:** Electrolytic, stranded, annealed plain copper wires to IEC 60228 Class 2 (Class 1 or Class 5 and / or tinned on request)

**Insulation:** XLPE compound to EN50290-2-29

Black/White twisted pairs with numbered cores

**Binder Tape:** Polyester foil on each twisted pair

**Individual Screen:** Aluminium/polyester foil with a tinned copper drain wire in direct contact with the metallic side of the foil

**Binder Tape:** Polyester foil on overall cable core formed by stranded pairs

**Collective Screen:** Aluminium/polyester foil with a tinned copper drain wire in direct contact with the metallic side of the foil

**Inner Sheath:** Halogen free flame retardant LSZH compound to EN50290-2-27

**Armour:** Round galvanised steel wires to EN 10257-1

**Outer Sheath:** Halogen free flame retardant LSZH compound to EN50290-2-27.

Blue for intrinsically safe cable, Black for UV resistant and/or non-intrinsically safe cable, Gray for indoor applications

### CODE of CABLE

- CU/XLPE/ISCR/OSCR/ LSZH/SWA/LSZH;  
RE-2X(S)tHSAWAH-PIMF

### INTRODUCTION

These cables used for connecting instruments and control systems for analogue or digital signal transmission for indoor and outdoor applications. These cables shall not be connected directly to mains electricity supply or other low impedance sources, since they are not designed to be used for power supply.

### SECTION RANGE

- From 0.50mm<sup>2</sup> up to 2.50mm<sup>2</sup>

### CONDUCTOR QUANTITY

- From 2 pairs up to 50 pairs

### COLOUR CODE of CABLE

- Insulation Colours code could be according to the International Standards or customer's request/demand.  
\* Other colours can be produced upon the customer requests.